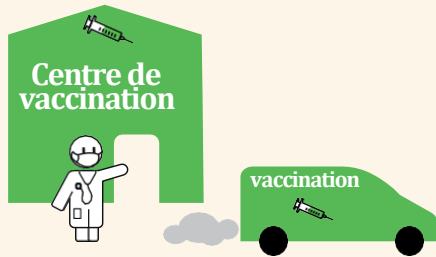




Covid Niankandé Covid – Nan niankandé

Février 2021

Niakandé niana kam moxo ?



Niakandé niana Mina ?

Kha laye niankandé niana niakandou dinguirra
Wala goupou béni gua do debbé ké.



Nan tokho tchaffa niankandé dinguirra bé
ga kha dinguirra :



• Khirindi fooni 0 800 009 110 (Khaffou)



• Internet : www.sante.fr

• Kha raye téllé TIRINDINDÉ niana diarandana
lékhé, yitté khobéra, wala mairie.



Labandé

Niankandé khaffou niani assou da.

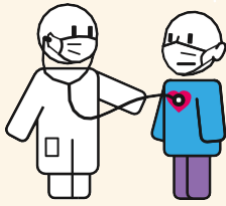


Kha tiguiti niankandé kayité ké (kem
moxo anna niankandé fillandi ké kitta.



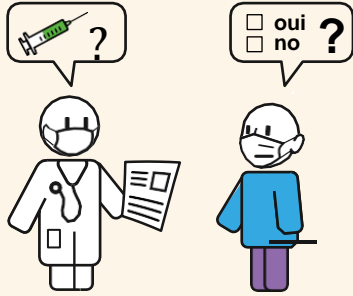
Khaddi kha diarré kayiti woutou.

Niankandé ay kiténé khar diarré kayiti
gan tam makha.

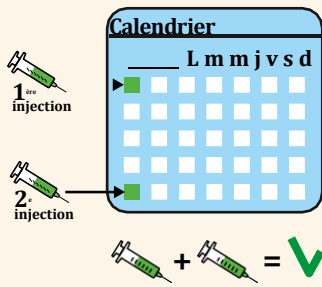


Katti niankandé ké

Niankandé kotta, Niankandana ké ay fayini sélli an do niankandé nan khawa.

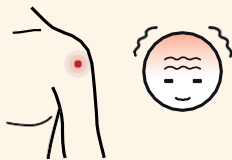


Ay yan tirindu diabini kem pallé anan tirindi sélli an nga leffi niankandé ké : Ay layye tini nio wala ayy.



Niankandé ké

Niankandé fillandi ké niana koyyou ndiattou niankandé fana ké anna kottou tanguéné.



Niankandé ké fallé

Fi dan tan To ray an kittana: bitto fana wala fillandi ké yimankara, fatan towoyé wala an kitté aga am moumana.



Trindindé ?

Kha raye téllé TIRINDINDE niana diarandana lékhé, yitté khobéra, wala mairie

walakha



Nan niankandé :

0 800 009 110

(khaffou)

Walakha **Santé.fr**

Ambinjam